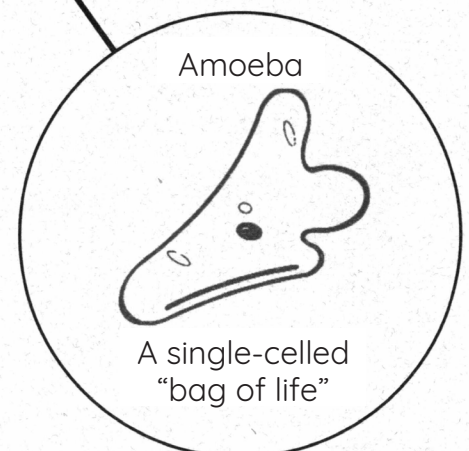
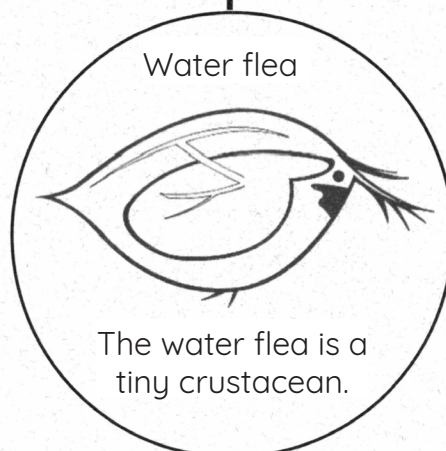
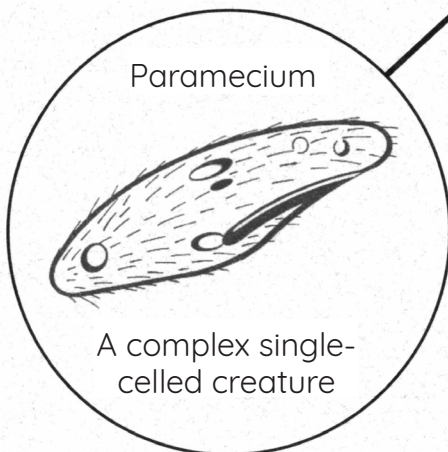
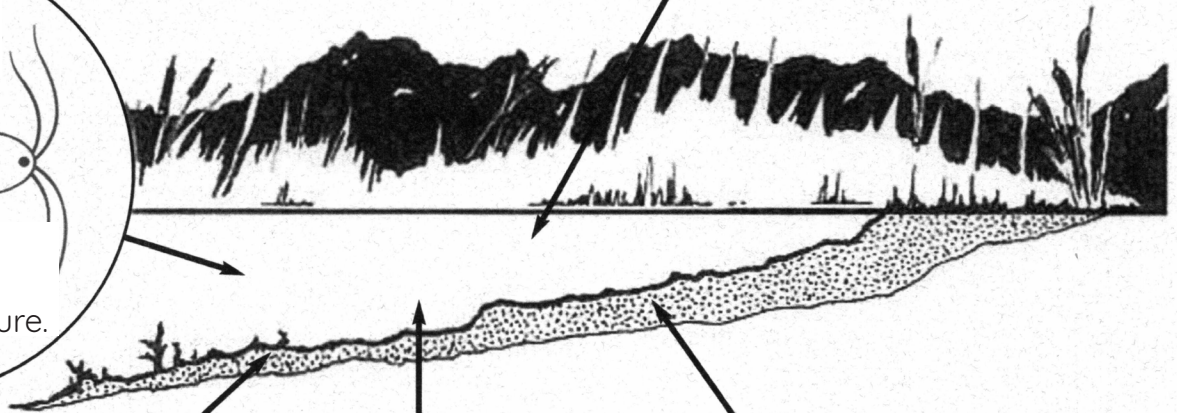
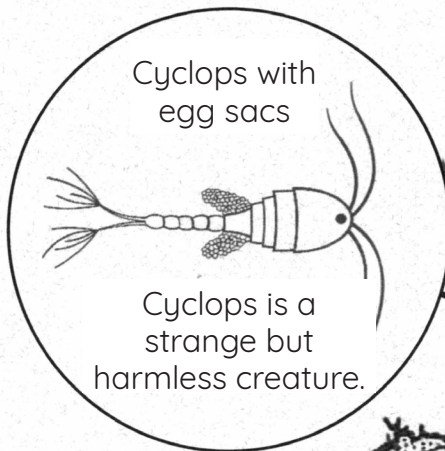
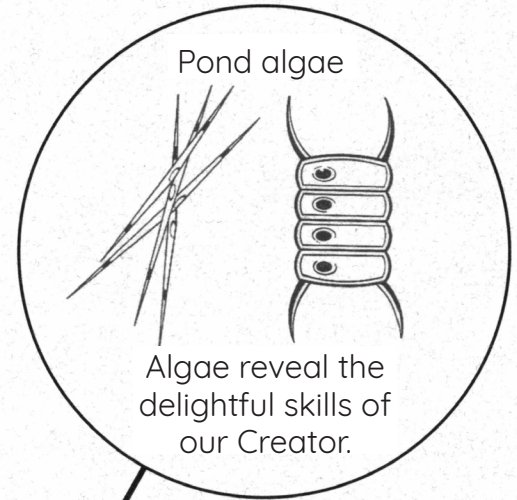


UNSEEN POND LIFE

Christ's tiny treasures

Here are a few of the fascinating microscopic pond plants and animals our Lord Jesus has created.

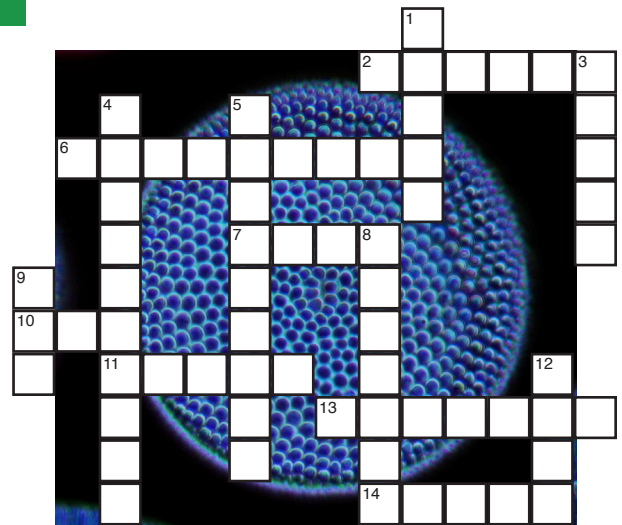


Answers to CROSSWORD found in
kids' kreation #55

Down: 1. ZONES 2. BACKSWIMMER
3. TURTLE 4. WINSOME
7. DELIGHT 10. DUCKS
Across: 2. BENTHOS 5. MUSKRAT
6. SKIN 8. WAVES 9. POND
11. LIMNETIC 12. GASES

CROSSWORD

The words used in the
CROSSWORD are taken
from the articles found
in **CREATOR** Volume 13
Number 2.



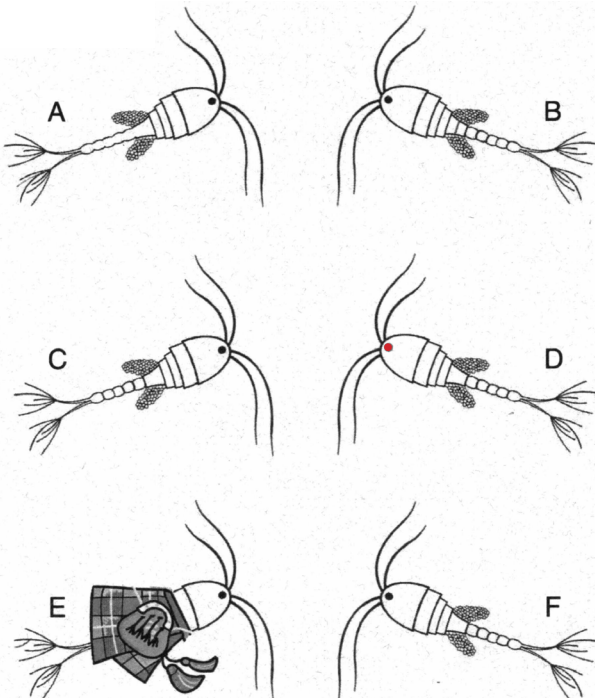
Diatom—© Diana Will / Shutterstock

Down

1. Diatoms are one-celled, green algae Jesus made from _____.
3. Amoebae (ah - MEE - bee) are bags of living stuff that constantly change their _____.
4. A _____ is a ciliate animal, which under the microscope looks like a fast-moving, fuzzy "slipper."
5. Sponges and _____ are two types of creatures you would not expect to find in a pond.
8. _____ is another name for a water flea.
9. The ____ Sea gets its name from a blue-green algae which sometimes stains its waters red.
12. Some ____-green algae produce poisonous chemicals that can kill animals that drink the pond water in which they grow.

FIND THE CYCLOPS TWINS

Kelsey and Chloe Cyclops are identical twins. Can you spot them hiding among the other cyclops?



C and F are the cyclops twins!

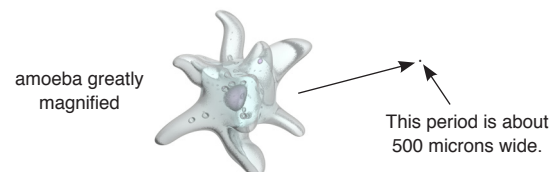
Across

2. Euglena are single-celled _____ that can see and move!
6. If the things Jesus created are dangerous, how much more _____ is God?
7. "Delight yourself in the _____..." (Psalm 37:4a).
10. Cyclops has a single _____ in the middle of her forehead.
11. Jesus covers ciliates with _____, which are microscopic hairs that beat back and forth.
13. Protozoa are single-celled _____.
14. "Pond scum" is a large collection of plants called _____.

FAMILY ACTIVITY: HYDRAS

You can observe hydras by collecting small pond plants—duckweed or pondweed—bringing them home and placing them in a glass of distilled water (hydras will die in chlorinated or polluted water). After a few hours, you will notice that several hydras have attached themselves to the sides of the glass.

The amoeba below is about the size of the period at the end of the arrows. Many of the creatures Jesus placed in ponds are incredibly small.



amoeba greatly magnified

This period is about 500 microns wide.

Amoeba—© 3d_man / Shutterstock