

EVEN FLOWERS

Obey Christ their Creator

Many flowers bloom at very specific times during the day or night. They thus proclaim God's absolute control over all creation!



10 a.m.

10

California poppy

11

12

12 noon



Wild daisy

1

Meadow salsify

2



3 a.m.

3

9



Moon flower

9 p.m.

A Flower Clock

8

8 a.m.



Scarlet pimpernel

7

Evening primrose



6 p.m.

6



Morning glory

6 a.m.



Four O'clock

4 p.m.

4

5

5 a.m.



Chicory

a.m. refers to flowers that bloom during the morning, from before dawn to noon.

p.m. blooming flowers open in the afternoon and evening.

WORD BANK

BACTERIA
BEAUTY
BROOD
EMERGENCE
EXTINCT

JOY
MAGICICADA
MIGRATION
NYMPH
OBEDIENCE

PEACE
TERN
TRUST
VIRUS
WORSHIP



© Olidxwnjw

WORD SEARCH

M I G R A T I O N W
A E Y T U A E B O B
G C X R N T E R N A
I N E T S O S T E C
C E Y V I H E S R T
I G O M I N P U D E
C R J P P R C R O R
A E X E B H U T O I
D M P E A C E S R A
A E C N E I D E B O



male

Northern Cardinals obey their Creator by staying together with their mate for life.



female

© Svetlana Foote / Shutterstock

Answers to CROSSWORD found in *kids' kreation* # 101

Down: 2. OBEDIENCE 3. DAYS
5. METEOROLOGY 6. STREAMS
8. CYCLONE 10. CONTROL 12. WIND
Across: 1. COLD 5. MYSTERY
7. WEATHER 9. CHANCE 11. LOVING
13. JUPITER

© Nadzeya Pakhomava / Shutterstock

CROSSWORD

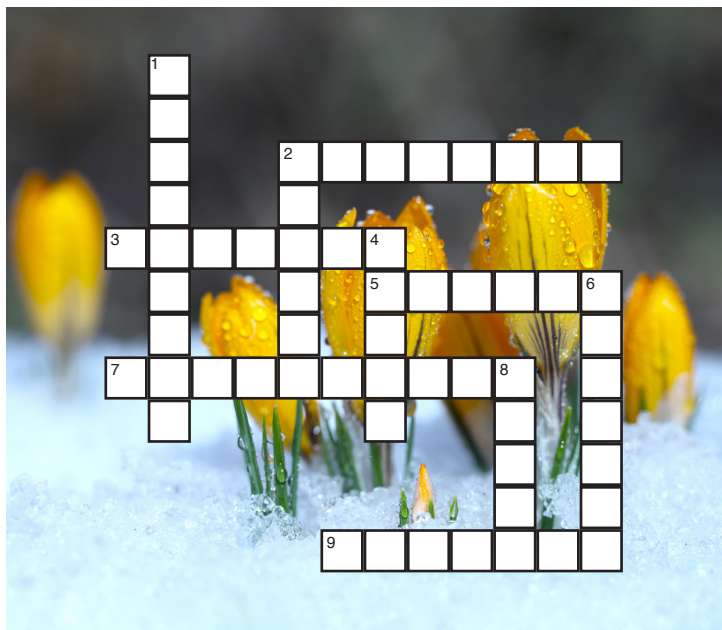
The words used in the WORD SEARCH and CROSSWORD are taken from the article found in *CREATOR* Volume 25 Number 2.

Down

1. In an ecosystem, each living thing depends upon the other in _____ to its Creator.
2. Obedience is vital to the health of our world, and is also the foundation of all true _____.
4. "For you, O LORD, are the Most High over all the _____." Psalm 97:9a
6. Periodical _____ are bugs that emerge from the ground every 17 or 13 years.
8. The brown tree _____ was accidentally introduced into Guam's unique forest ecosystem in the 1940s.

Across

2. Jesus placed countless _____ and viruses in the ocean (and our bodies) to keep it healthy.
3. About 40 percent of bird species _____ each year.
5. Arctic terns raise their chicks in the _____ Circle.
7. We need to understand how _____ function in order to obey Christ's original command to care for creation (Genesis 2:15).
9. Scientists have discovered several cases of _____ and frogs living together in the same burrow.



Meadow salsify—© SeDmi / Shutterstock
Chicory—© Can Stock Photo / Dole
Morning glory—© Can Stock Photo / _Vilor
Scarlet pimpernel—© Can Stock Photo / spline
California poppy—© Can Stock Photo / kiyanochka
Wild daisy—© Can Stock Photo / Elenathewise
Four O'clock—© Can Stock Photo / Noppharat
Evening primrose—© Can Stock Photo / spline
Moon flower—© Witsanuwat / Shutterstock